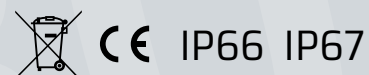


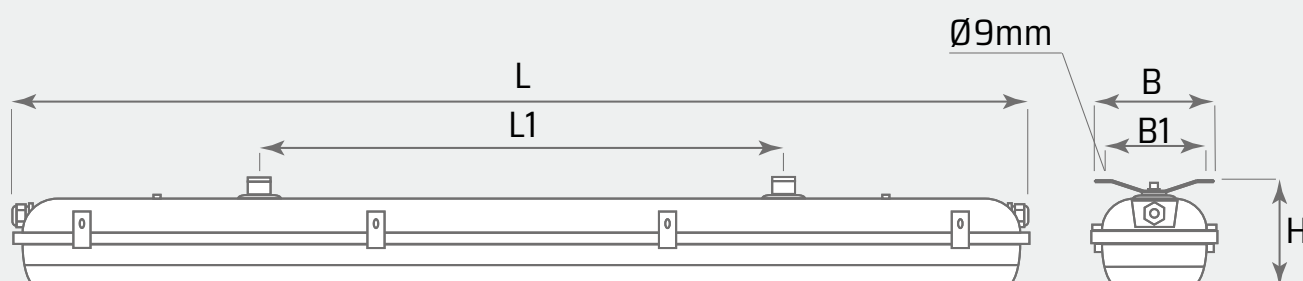
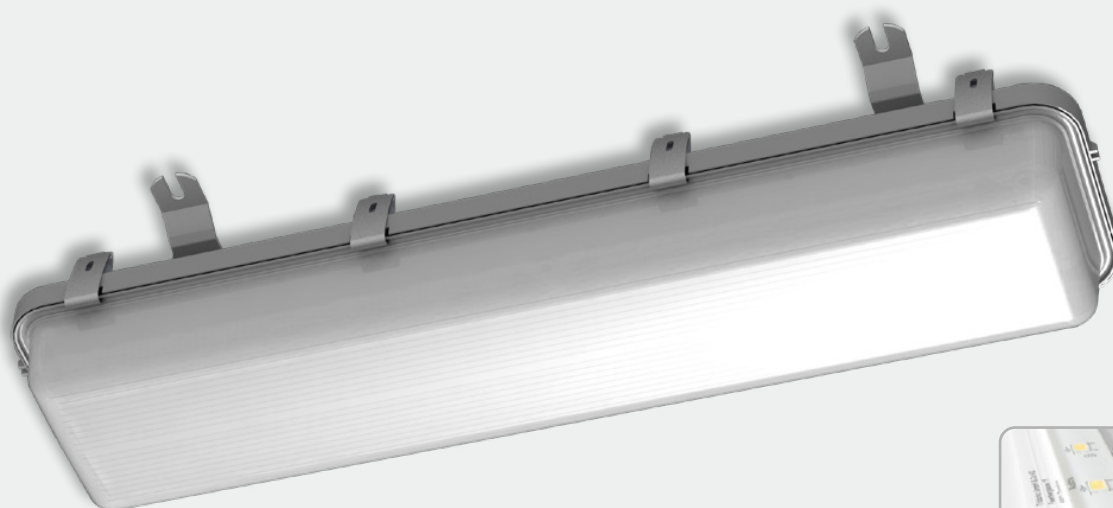
# INS230LED-C4



**C4** - special version of the luminaire designed for use in an atmosphere of high corrosiveness. All external, metal elements of the light fitting are made of stainless steel.

Water and dustproof industrial light fitting with encapsulated LED modules designed for use in highly corrosive environments.

Housing made of glass fiber reinforced polyester, diffuser made of PMMA.



TYPE	L	L1	B	B1	H
INS230LED-0600	673	450	190	160	134
INS230LED-1200	1283	660	190	160	134

## LUMINAIRE FEATURES

- Designed for use in an atmosphere of high corrosiveness
- Possibility of connecting to the collective power supply system
- Lighting of escape routes, open spaces, fire points and high risk zones
- Housing is made of glass fibre reinforced polyester, diffuser of PMMA
- Additional mounting accessories

## TECHNICAL DATA

Supply voltage	230V AC 0/50-60Hz	
Terminal block	3x2.5 mm <sup>2</sup>	
Protection class	I	
Ingress protection	IP66, IP67	
Light source type	encapsulated LED modules	
Light colour temperature	4000K	
Light source supply power	<b>1200-B4-1</b>	18,8W
	<b>0600-J2-3</b>	27,2W
	<b>1200-J4-1</b>	36,6W
	<b>1200-J4-3</b>	53,5W
	<b>1200-B4-1</b>	72,1W
Power factor	≥ 0,95	
CRI	> 80	

Classification on reaction on fire	euroclass D	
Luminous flux / Mean emergency mode luminous flux	<b>1200-B4-1</b>	2365lm / 551lm
	<b>0600-J2-3</b>	3188lm / 497lm
	<b>1200-J4-1</b>	4787lm / 561lm
	<b>1200-J4-3</b>	6566lm / 512lm
Light source lifespan	<b>1200-B4-1</b>	9797lm / 630lm
	> 70 000h L <sub>80</sub> B <sub>10</sub>	
Efficiency	<b>1200-B4-1</b>	126lm/W
	<b>0600-J2-3</b>	117lm/W
	<b>1200-J4-1</b>	131lm/W
	<b>1200-J4-3</b>	123lm/W
	<b>1200-B4-1</b>	136lm/W
Ambient temperature	<b>1200-B4-1</b>	-25 - +40°C
	<b>other types</b>	-25 - +45°C

## MATERIAL

**Housing** - glass fibre reinforced polyester

**Diffuser** - PMMA

**Mounting plate** - galvanized steel sheet

**Clamps** - stainless steel

## MOUNTING TYPE

Luminaire for direct installation on ceiling or wall with use of mounting bracket.

## EMERGENCY VERSIONS

**A3** - version with 3h emergency module, available only with 34E power supply (230V, 50-60Hz), the luminaire equipped with this module can work at an ambient temperature from 0°C

**A35** - version with 1h emergency module ES-AW-9, available only with 34E power supply (230V, 50-60Hz), the luminaire equipped with this module can work at an ambient temperature from -20°C

**ZB** - version without switching module

**ZBH** - version with switching module MAPS-01/SOAM-01

## CABLE INLETS

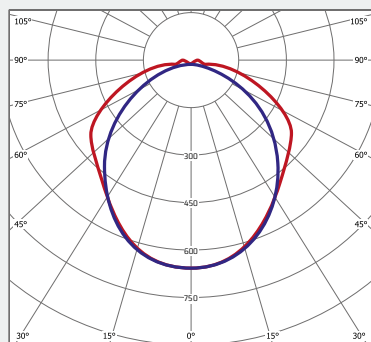
**10, 11, 20, 21, 22** - cable glands entries positions are shown below



**P** - plastic cable gland

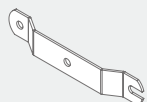
**20** - M20 cable gland, **25** - M25 cable gland (cable gland entries positions **20, 21, 22** are not available in **P25** version).

## DISTANCE TABLE

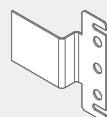


cd/klm — — C0 - C180 — C90 - C270

## MOUNTING ACCESORIES



**AM01** - standard mounting bracket made of 1.5mm thick steel, mounting hole spacing 190mm



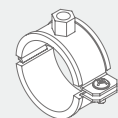
**AM06** - welded, stainless steel bracket with  $\varnothing 9$ mm mounting holes and 60mm or 85mm spacing



**AM02** - eye sling for mounting the light fitting on wire



**AM07** - stainless steel, adjustable bracket for LED floodlights



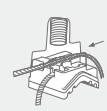
**AM03** - stainless steel hoop for pipe of diameter 60-63mm



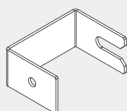
**AM08** - suspension kit for steel wire with length adjustment



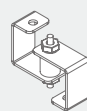
**AM04** - bracket for installation at 45°



**AM09** - adjustable clamp for pipe with M8 or M10 thread



**AM05** - 68mm distance bracket



**AM010** - vibration isolating mounting bracket

**ORDERING**

	<b>INS230LED</b>	<b>0600</b>	-	<b>J2</b>	-	<b>1</b>	-	<b>35E</b>	-	<b>20</b>	-	<b>10P20</b>	-	<b>GRP</b>	-	<b>PM</b>	-	<b>AM01</b>	-	<b>ZBH</b>	-	<b>C4</b>
Approximate length:																						
<b>0600</b>	- 60 cm																					
<b>1200</b>	- 120 cm																					
LED module type:																						
<b>J2</b>	- LED module type, quantity																					
<b>B4</b>	- LED module type, quantity																					
Driving current:																						
<b>1</b>																						
<b>3</b>																						
Power supply:																						
<b>34E</b>	- 230V, 0/50-60Hz																					
<b>35E</b>	- 230V, 50-60Hz																					
Wiring:																						
<b>20</b>	- 2 wires ending																					
<b>22</b>	- 2 wires through																					
<b>... 30, 33, 40, 44, 50, 55, 60, 66, 70, 77...</b>																						
<b>80</b>	- 8 wires ending																					
<b>88</b>	- 8 wires through																					
Cable inlets:																						
<b>10P20, 10P25</b>																						
<b>11P20, 11P25</b>																						
<b>20P20</b>																						
<b>21P20</b>																						
<b>22P20</b>																						
Housing material:																						
<b>GRP</b>	- glass fibre reinforced polyester																					
Diffuser material:																						
<b>PM</b>	- PMMA cristal																					
<b>PT</b>	- PMMA clear																					
Mouting bracket:																						
<b>AM01, AM02, AM04, AM05, AM010</b>																						
Emergency version:																						
<b>A3, A35, ZB, ZBH</b>																						
Special version:																						
<b>C4</b>	- for use in an atmosphere of high corrosiveness																					