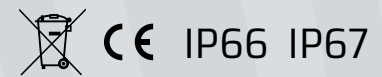
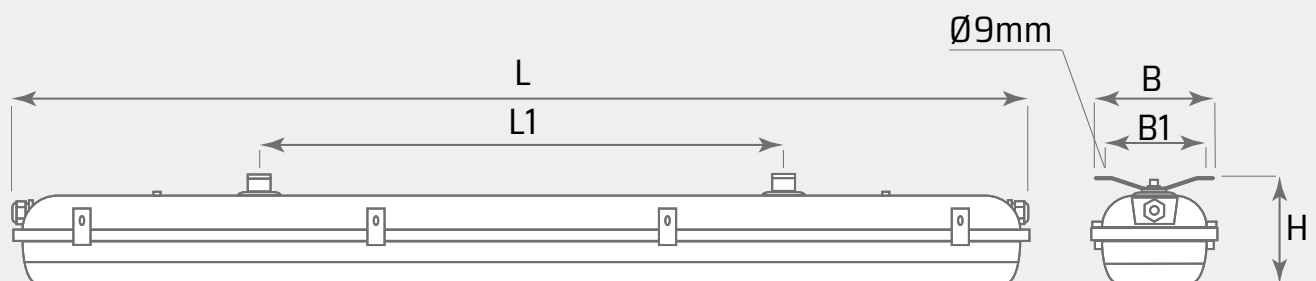
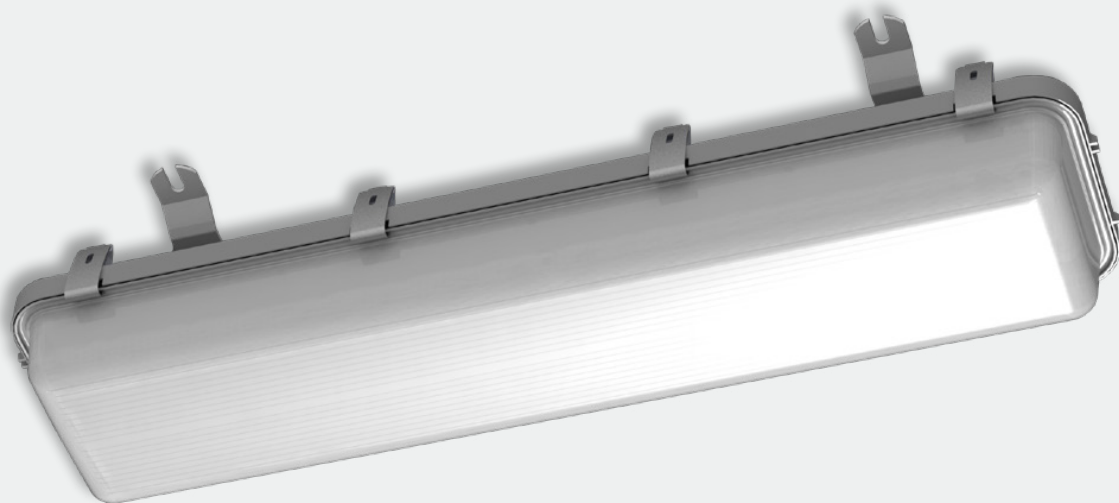


EXL210LED



Explosionproof light fitting with LED modules. Designed to use in zones 21 & 2,22 of gas and steam of flammables liquids, 1,19 as well as combustible dusts and fibers explosion hazard areas.

Light fitting in standard suitable for central battery. During the emergency mode, light flux is reduced to 50%, what increases operating time of the installation running on the battery.



TYPE	L	L1	B	B1	H
EXL210LED-0600	673	450	190	160	134
EXL210LED-1200	1283	660	190	160	134
EXL210LED-1500	1283	900	190	160	134

LUMINAIRE FEATURES

- Explosionproof lighth fitting
- Possibility of connecting to the monitoring system or collective power supply system
- Lighting of escape routes, open spaces, fire points and high risk zones
- Housing is made of UV resistant polycarbonate

TECHNICAL DATA

Supply voltage	230V AC 0/50-60Hz	
Terminal block	3x2.5 mm ²	
Protection class	I	
Ingress protection	IP66, IP67	
Light source type	LED modules	
Light colour temperature	4000K or 6500K (option)	
Light source supply power	0600-E2	17.4W
	0600-E4	33.4W
	1200-E4	40.4W
	1200-E8	65.7W
	1500-E6	50.4W
Power factor	≥ 0.97	
CRI	> 80	

Luminous flux / Mean emergency mode luminous flux for A3 version / ZB version	0600-E2	2610 / 461 / 1305lm
	0600-E4	5054 / 509 / 2527lm
	1200-E4	6234 / 507 / 3117lm
	1200-E8	10102 / 579 / 5051lm
	1500-E6	7998 / 516 / 3999lm
Light source lifespan	> 50 000h L ₇₀ B ₁₀	
Efficiency	0600-E2	150lm/W
	0600-E4	151lm/W
	1200-E4	154lm/W
	1200-E8	154lm/W
	1500-E6	159lm/W
Ambient temperature	A3	+5 - +45°C
	other	-40 - +45°C

MATERIAL

- Housing** - polycarbonate UV stabilized
- Diffuser** - polycarbonate UV stabilized
- Mounting plate** - galvanized steel sheet, powder painted
- Clamps** - stainless steel

MOUNTING TYPE

Luminaire for direct installation on the ceiling or on the wall with use of mounting brackets.

EMERGENCY VERSIONS

A3 - version with 3h emergency module, available only with 34E power supply (230V, 50-60Hz), the luminaire equipped with this module can work at an ambient temperature from 5°C

ZB - version without switching module

ZBH - version with switching module MAPS-01/SOAM-01

CABLE INLETS

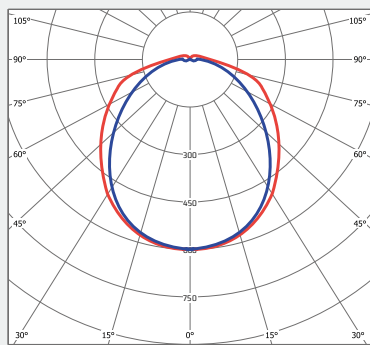
10, 11, 20, 21, 22 - cable glands entries positions are shown below



P - plastic cable gland

20 - M20 cable gland, **25** - M25 cable gland (cable gland entries positions **20, 21, 22** are not available in **P25** version).

DISTANCE TABLE



cd/klm — — C0 - C180 — — C90 - C270

ORDERING

	EXL210LED	0600	-	J2	-	35E	-	20	-	10P20	-	PC	-	PC	-	ZBH
Approximate length:																
0600 - 60 cm																
1200 - 120 cm																
1500 - 150 cm																
LED module type:																
E2 - module type, quantity																
E4 - module type, quantity																
E6 - module type, quantity																
E8 - module type, quantity																
Power supply:																
34E - 230V, 0/50-60Hz																
35E - 230V, 50-60Hz																
Wiring:																
30 - 2 wires ending																
33 - 2 wires through																
... 40, 44, 50, 55, 60, 66, ...																
80 - 8 wires ending																
88 - 8 wires through																
Cable inlets:																
10M20, 10M25, 10P20, 10P25																
11M20, 11M25, 11P20 (not available for A3 60cm version), 11P25																
20M20, 20P20																
21M20, 21P20																
22M20, 22P20																
Housing material:																
PC - polycarbonate																
Diffuser material:																
PC - polycarbonate																
Emergency version:																
A3, ZB, ZBH																